

Customer :

customer

Customer part :

customer part

Comment :

Comment

S1=1.82

S2=2.16

Tmax=459

Tp S2=498.0

PI=0.46

HI=111

Sample =1633.60

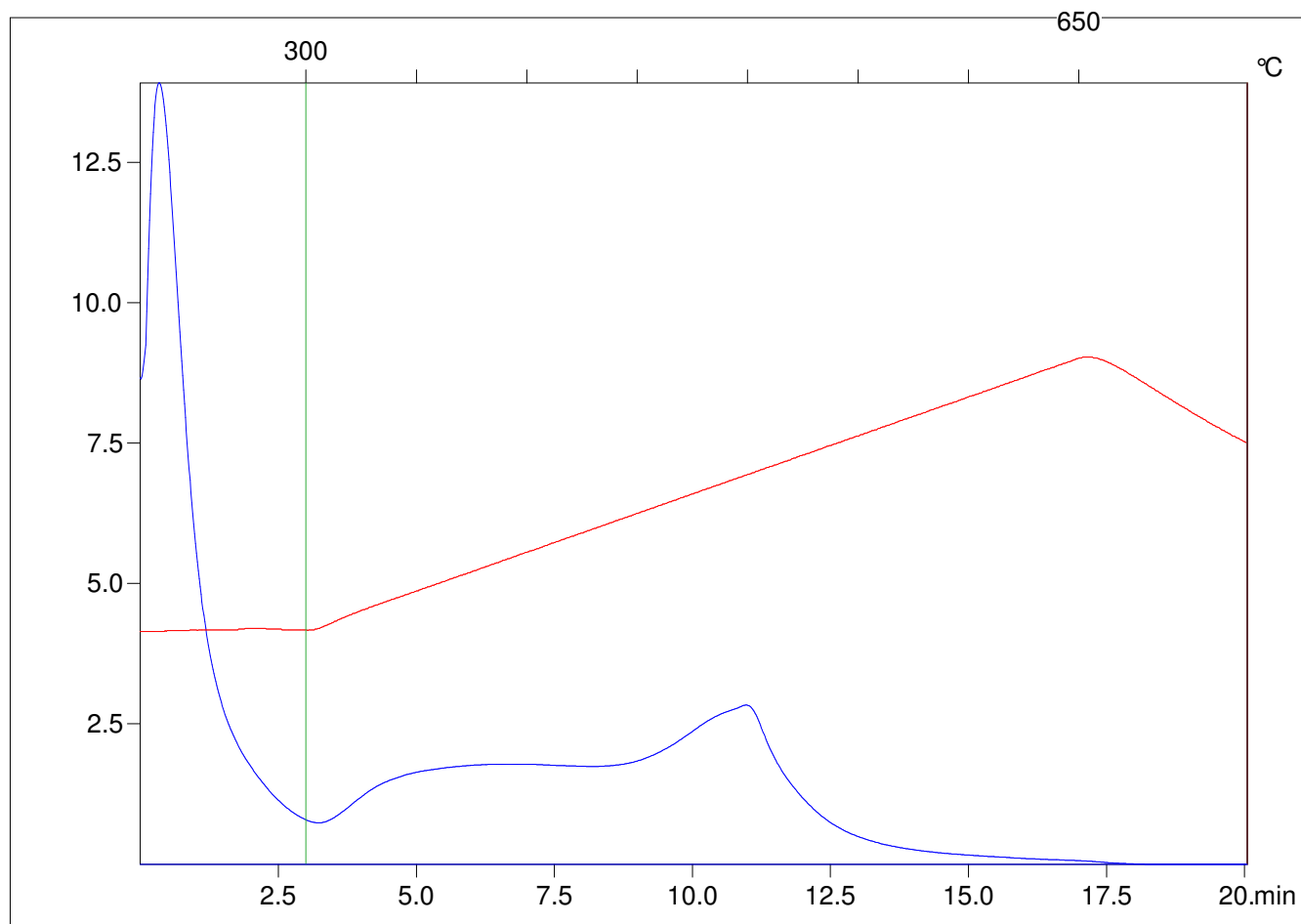
Method =Bulk Rock

Cycle=Basic

KFID(10*9)=1444

Qty =70.5

TOC=1.95



C:\VINC\PK1792\PK028.R00 : FID pyrolysis graphic

State

Pyro Status

Oxi Status